

## GENERAL INFORMATION

### Membership:

To join NCSPP, please use the attached registration card or visit the NCSPP website: [www.ncspp.org](http://www.ncspp.org).

### Disabilities:

NCSPP, CAMFT, and Division 39 are committed to accessibility and non-discrimination in its continuing education activities. If participants have special needs, we will attempt to accommodate them. If you have concerns about handicapped accessibility, please contact Niki Clay.

### Privacy and Confidentiality:

All participants are asked to be aware of the need for privacy and confidentiality throughout all programs.

NCSPP, CAMFT, and Division 39 are committed to conducting all activities in conformity with the American Psychological Association's Ethical Principles for Psychologists. Participants are asked to be aware of the need for privacy and confidentiality throughout the program. If program content becomes stressful, participants are encouraged to process these feelings during discussion periods. Please address questions, concerns or complaints to Niki Clay.

Participants will be informed of the utility/validity of the content/approach discussed (including the basis for the statements about validity/utility), as well as the limitations of the approach and most common (and severe) risks, if any, associated with the program's content.

### Target Audience and Level:

The ISG is for clinicians with moderate to extensive experience in clinical work with some background in the principles of psychoanalytic approaches or laypersons with a strong academic or cultural interest in applied or clinical psychoanalysis. Class size in each study group is limited to the first 15 students.

### Commercial Support:

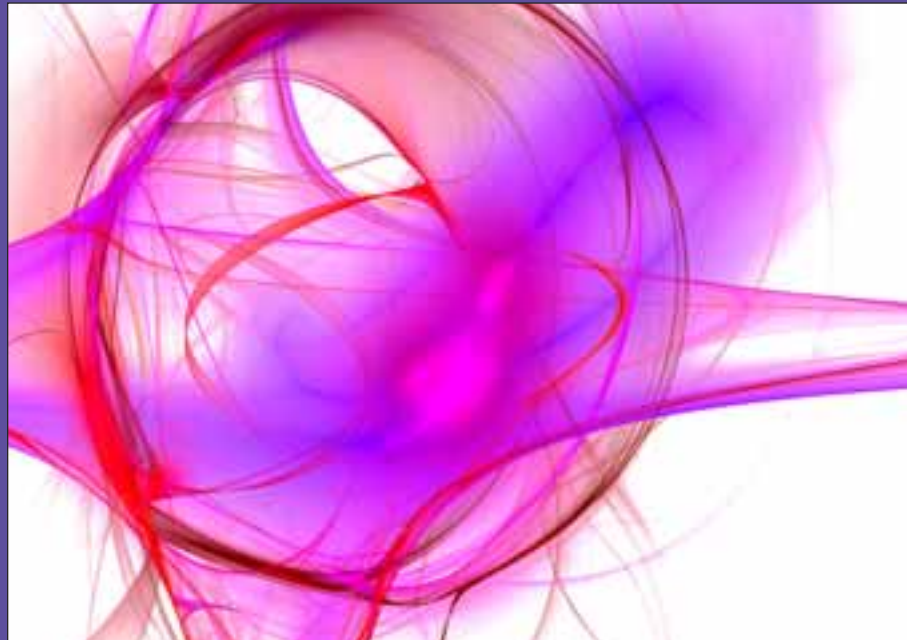
There is no commercial support for NCSPP programs nor are there any relationships between the CE Sponsor, presenting organization, presenter, program content, research, grants, or other funding that could reasonably be construed as conflicts of interest.

**A \$25 bank charge plus \$15 administrative charge will be issued on all returned checks.**

The Northern California Society for Psychoanalytic Psychology (NCSPP) is the local chapter of Division 39, American Psychological Association. NCSPP is committed to the study of psychoanalytic psychology and the encouragement of its interests in the professional and general communities. It is a multidisciplinary, nonprofit educational membership organization open to all mental health professionals. For information visit our website at [www.ncspp.org](http://www.ncspp.org).



184 Blackstone Drive  
San Rafael, CA 94903  
[www.ncspp.org](http://www.ncspp.org)



NORTHERN  
CALIFORNIA  
SOCIETY FOR  
PSYCHOANALYTIC  
PSYCHOLOGY

## FACULTY

**Daniel G. Butler, Ph.D., LMFT**, is a psychoanalytic candidate at PINC and a graduate of UC Santa Cruz's History of Consciousness Program. In addition to teaching at SFCP and Access Institute, he serves on the editorial boards of *Studies in Gender and Sexuality* and *Journal of the American Psychoanalytic Association*. His private practice is in San Francisco's Hayes Valley.

**Deborah Melman, Ph.D.**, is on the faculty at the Wright Institute, PINC, and SFCP. She has a private practice in Berkeley.

**Susana Winkel, Ph. D.**, received her psychoanalytic training at SFCP, where she is a faculty member. Dr. Winkel has taught at UC Berkeley and Tsing-Hua University in Beijing. A classically trained musician, she is interested in applying psychoanalysis to the study of music. Her private practices are in San Francisco and Oakland.

2024-2025  
ISG  
*Intensive Study Group*

2024-2025  
ISG  
*Intensive Study Group*

# PSYCHOANALYSIS: Breakdown and Breakthrough

We live in a society obsessed with constant innovation and change, where promised breakthroughs can cause collective breakdown. In the clinical relationship, too, genuine breakthroughs can often be experienced as cataclysmic events, threatening the self by piercing the illusion of living in a predictable world. An important task of the contemporary therapist is to reckon with how the therapeutic relationship may be utilized to help patients access their emotional experience and vitality. This often involves a delicate balance between theory and praxis, tradition and the entirely unexpected.

Premature ruptures of defenses, empathic failures and, most severely, when reality itself begins to fracture ... all may generate breakdowns. Yet psychological growth can also come on the heels of great pain and turmoil. Often, we associate breakthroughs with healing and the development of insight, but glimpses of sadism, psychosis, and the id also break through carefully constructed facades.

By delving into clinical aspects of cultural, social, and political upheaval, this course will create space for clinicians to process, grapple, and play with experiences of and responses to the ever-shifting reality in which we and our patients find ourselves. In a way unique to psychoanalysis, this course explores the nuances of these phenomena while also exploring potential limits to what psychoanalysis can offer and what interdisciplinary ideas can enhance the breadth and depth of our thinking.

For full course information and course objectives, please visit our website: [www.ncspp.org](http://www.ncspp.org)

## COMMITTEE MEMBERS INTENSIVE STUDY GROUP

Tanisha Stewart, Psy.D., Interim Chair  
Yael Goldstein-Love, MA  
Sullivan Oakley, MA  
Rebecca Shapiro, MA

## INTRODUCTORY EVENT – STAY TUNED!

PSYCHOANALYSIS: Breakdown & Breakthrough

Saturday or Sunday in late summer

Location: Virtual Event

Daniel Butler, Susana Winkel, and Deborah Melman discuss their approaches to the year’s theme, Psychoanalysis: Breakdown and Breakthrough, exploring clinical aspects of cultural, social, and political upheaval. In this course, clinicians can process, grapple, and play with our ever-shifting reality. Whether it’s technology’s ubiquity or early developmental ruptures, psychoanalytic clinicians need a vocabulary to describe breakdowns and breakthroughs as they occur. How do we conceptualize these fractures? How do we speak to them from within the therapeutic relationship?

## CLASS SCHEDULE

### PSYCHOANALYSIS: Breakdown and Breakthrough

22 Weeks | November 8, 2024 – May 9, 2025

Fridays | 10:00 am – 12:00 pm

Location: St. Clement’s Episcopal Church  
2837 Claremont Boulevard, Berkeley, CA 94705

#### The Negentropic Clinic: Breakdown and Breakthrough in the Entropocene

Daniel Butler, Ph.D., LMFT  
November 8, 15, 22; December 6, 13, 20; January 10, 17

According to the late philosopher Bernard Stiegler, we live in an era of rampant social and political breakdown that he calls the Entropocene. For certain segments of 21st-century society, breakdown has become so routine that fearing it increasingly seems pointless. Technological innovations promise to deliver society from breakdown by proffering breakthroughs ironically diminishing the 21st-century subject’s capacity to live a psychically rich life. Contemporary psychoanalysis contends with the ways these social forces dissociate psyche from soma and reduce the drive to live to an instinct to survive. Affect eludes many of our devitalized patients for whom both fear of breakdown and faith in breakthrough seem like abstract notions rather than felt experiences. To become affectable subjects, our patients must reckon with a social entropy that demands their dissociative mentation if they are to keep pace with an accelerating society. Although the Entropocene is considered a global phenomenon, our patients reckon with its effects in psychically and socially specific ways. Focusing on primary texts from psychoanalysis, philosophy, and adjacent fields, this course aims to delineate what a reckoning with the Entropocene might clinically entail. Our comparative approach will engage Freudian, Fanonian, Lacanian, Kleinian, Bionian, and Winnicottian perspectives.

#### Breakdown and Breakthrough in the Therapeutic Dyad

Susana Winkel, Ph.D.  
January 31; February 7, 14, 21, 28; March 7, 14, 21

This course will examine elements involved in the emergence of a potential breakdown and its subsequent breakthrough within the psychoanalytic dyad by developing a systematic way to describe and understand different aspects of the clinical situation. This seminar will emphasize the rigorous distinctions between conjecture and observation. A combination of open-mindedness regarding observable clinical material and a steady focus on the distinction between theoretical concepts and clinical observations will prepare the participant for the double task of theoretical soundness and clinical proficiency.

#### Rupture and the Terror of Disruption

Deborah Melman, Ph.D.  
April 4, 11, 18, 25; May 2, 9

Whether we’re concerned with breakdown or breakthrough, we’re in the terrain of rupture. In both cases, a “threat to the self”, as it is known, and to its provision of a protective shell provides an illusion of living in a predictable world. This course will consider the clinical impact of such ruptures and the fears they engender: the horror of losing definition, identity, or dropping into discontinuity with no sign of a way back; or the glimmerings of moments where what breaks through is the possibility of being alive.

## REGISTRATION INFORMATION

### PSYCHOANALYSIS: Breakdown and Breakthrough

Registration Deadline: Friday, October 25, 2024  
Tuition: General Public: \$1620  
NCSPP Member Discount: \$1260  
NCSPP Community Mental Health Practitioner Discount: \$1150

ISG participants are eligible for 12 sessions of consultation with a PINC analyst at \$70 per session to help with the integration of the material into clinical practice.

Scholarship: One scholarship may be granted based on space available. Scholarship applications must be received by Friday, October 25, 2024. For more information and to request a scholarship application please contact Niki Clay.

General Public: \$700 deposit with registration;  
\$920 remainder due by Friday, October 25, 2024.

NCSPP Members: \$340 deposit with registration;  
\$920 remainder due by Friday, October 25, 2024.

NCSPP CMH Members: \$230 deposit with registration;  
\$920 remainder due by Friday, October 25, 2024.

NOTE: Tuition does not include the cost of reading material.

CE Credit: 16 CE credits will be earned for segment 1; 16 CE credits will be earned for segment 2; 12 CE credits will be earned for segment 3.

Participants must attend 80% of any given segment to receive CE credit, attendance for less than 80% does not earn CE credit. Upon completion of a course evaluation, a CE certificate will be issued to eligible participants. This serves as documentation of attendance for all participants.

LCSWs/LPCCs/LEPs/MFTs – These courses meet the qualifications for CE credit as required by the California Board of Behavioral Sciences. CAMFT Provider #57020.

Psychologists – Psychologists receive credit through Division 39 upon completion of this course. Division 39 is approved by the American Psychological Association to sponsor continuing education for psychologists. Division 39 maintains responsibility for this program and its content.

Refunds: Students not admitted due to space limitation will receive a full refund of their deposit. Cancellations prior to Friday, October 25, 2024: full refund of deposit minus \$100 administration charge. Cancellations after Friday, October 25, 2024: No refund provided.

Administration | Registration questions:  
Niki Clay, info@ncspp.org or (415) 496-9949

ISG Program questions:  
Sullivan Oakley, MA, soakley@wi.edu

## REGISTRATION CARD INTENSIVE STUDY GROUP

PSYCHOANALYSIS:  
Breakdown and Breakthrough

TWO WAYS TO REGISTER:  
ONLINE: [www.ncspp.org](http://www.ncspp.org)  
MAIL: NCSPP, 184 Blackstone Drive, San Rafael, CA 94903

NAME \_\_\_\_\_ DEGREE \_\_\_\_\_  
ADDRESS \_\_\_\_\_  
CITY \_\_\_\_\_  
STATE + ZIP \_\_\_\_\_  
PHONE \_\_\_\_\_  
EMAIL \_\_\_\_\_

I WOULD LIKE TO JOIN NCSPP AND REGISTER AT THE DISCOUNTED NCSPP MEMBER RATE:  
 \$120 FULL MEMBER (All licensed mental health professionals) \$ \_\_\_\_\_  
 \$90 COMMUNITY MENTAL HEALTH MEMBER (Mental health workers who conduct at least 50% of their professional duties at a CMH agency) \$ \_\_\_\_\_  
 \$60 ASSOCIATE MEMBER (Pre-licensed mental health professionals) \$ \_\_\_\_\_  
 \$30 STUDENT MEMBER (Student, non-licensed professionals, must include copy of current student ID) \$ \_\_\_\_\_

I WOULD LIKE TO REGISTER FOR THE ISG:  
 \$700 Deposit – General Public \$ \_\_\_\_\_  
 \$340 Deposit – NCSPP Member \$ \_\_\_\_\_  
 \$230 Deposit – NCSPP CMH Member \$ \_\_\_\_\_

TOTAL AMOUNT ENCLOSED: \$ \_\_\_\_\_

PAYMENT METHOD:  
 CHECK payable to NCSPP  VISA  MASTERCARD  AMEX

CREDIT CARD # \_\_\_\_\_  
EXPIRATION DATE \_\_\_\_\_ CARD SECURITY CODE \_\_\_\_\_  
NAME AS IT APPEARS ON CREDIT CARD \_\_\_\_\_  
SIGNATURE \_\_\_\_\_